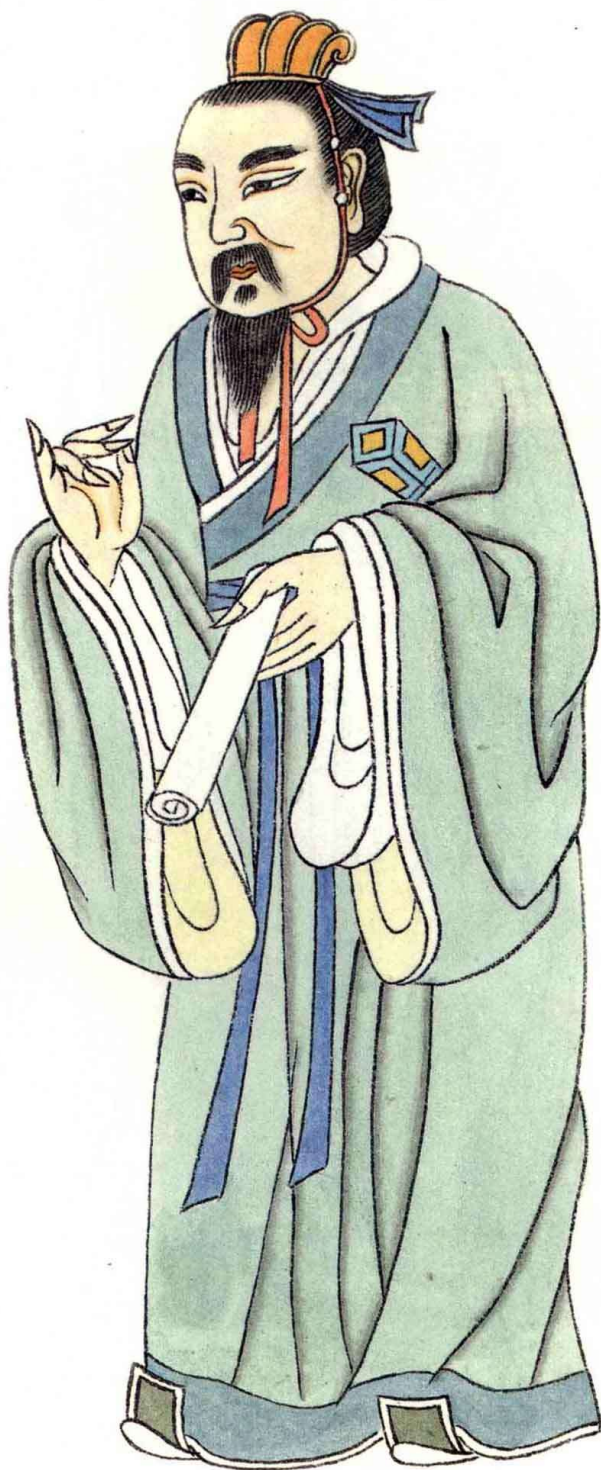


字子恒，春秋末年鲁国人。唐玄宗开元二十七年追封为「乘氏伯」，宋真宗大中祥符二年加封为「临濮侯」，明世宗嘉靖九年后改称「先贤施子」。

65 施之常



65. SHI ZHICHANG

Shi Zhichang, styled Zihang, was a native of the State of Lu in the late Spring and Autumn period. In the 27th year of the Kaiyuan reign period of Emperor Xuanzong of the Tang Dynasty he was given the title of Count Shengshi; in the second year of the Dazhong Xiangfu reign period of Emperor Zhenzong of the Song Dynasty, Duke Linpu; and in the ninth year of the Jiajing reign period of Emperor Shizong of the Ming Dynasty, Ancient Sage Shi Zi.